

OSO INDUSTRIES

PROJECT GUIDE



THE BRAND

Oso Industries is a design studio focusing on new applications of concrete for furniture and custom interior design. Inspired by urban living, sculptor and founder Eric Weil and his team individually hand craft multifunctional furniture and architectural elements featuring concrete and other materials in clean, geometric forms.





A BRIEF HISTORY

Eric Weil began Oso Industries after studying sculpture in college as well as woodcarving in Ghana. It was here in Ghana where he was inspired by traditional furniture design. After moving to New York City and recognizing concrete's untapped potential for use in design, he focused on this adaptable material and founded Oso Industries in Brooklyn in 2004. Elevating concrete — often overlooked and considered utilitarian — into beautiful, highly polished surfaces has been his focus ever since. Over the years, the design studio has continued to find new uses for concrete by coupling it with stainless steel, bronze, walnut, and colored glass.

SERVICES



CAST-IN-PLACE

We can cast counters and surfaces on site, where we make the molds to cast the concrete into in place, so that the pieces that we cast can be monolithic, no matter the size, we can cast interesting details, like monolithic waterfall sides, where the countertop turns down the side of the cabinets and to the floor. When we cast countertops in place, we hand trowel the surfaces so they have a beautifully mottled surface but with a smooth to the touch texture. These tops are very durable.





PRE-CAST

Pre-cast means that the tops (or objects really) are cast in our shop and brought to be installed as finished pieces. We can hone and polish the concrete in our shop so it is super smooth and very uniform. We can also machine polish and process the concrete to be very crisp and sharp. This process also allows us to create terrazzo finishes, which can be infinitely customized. Using our mold making expertise, we can create most any design in concrete as a precast piece.



TROWELED SURFACES

Concrete can be applied to a variety of surfaces (floors, walls, backsplashes, on top of built structures) by using a Venetian plaster type of application using steel trowels to flatten and smooth out the surfaces. Using the steel trowels creates the beautifully mottled finishes that are associated with hand applied concrete finishes, but our techniques allow us to create perfectly smooth surfaces.



TILING



TILING SYSTEMS

Tiling systems are designed for decorative wall surfaces. Designed tile systems include the Aperiodic which is based on a set of three triangles that can be laid out in an aperiodic, or non-repeating, pattern which results in unique and constantly changing compositions.

APERIODIX – HILLS

Aperiodix is a concrete tiling system designed for decorative wall surfaces designed by Ben Sandell, Situ Studio, Geoff Sosebee and Eric Weil for Oso Industries. The system is based on a set of three triangles that can be laid out in an aperiodic, or non-repeating, pattern which results in unique and constantly changing compositions. The Aperiodix system uses these three triangles and their mirrored shapes for a total of six unique tiles.



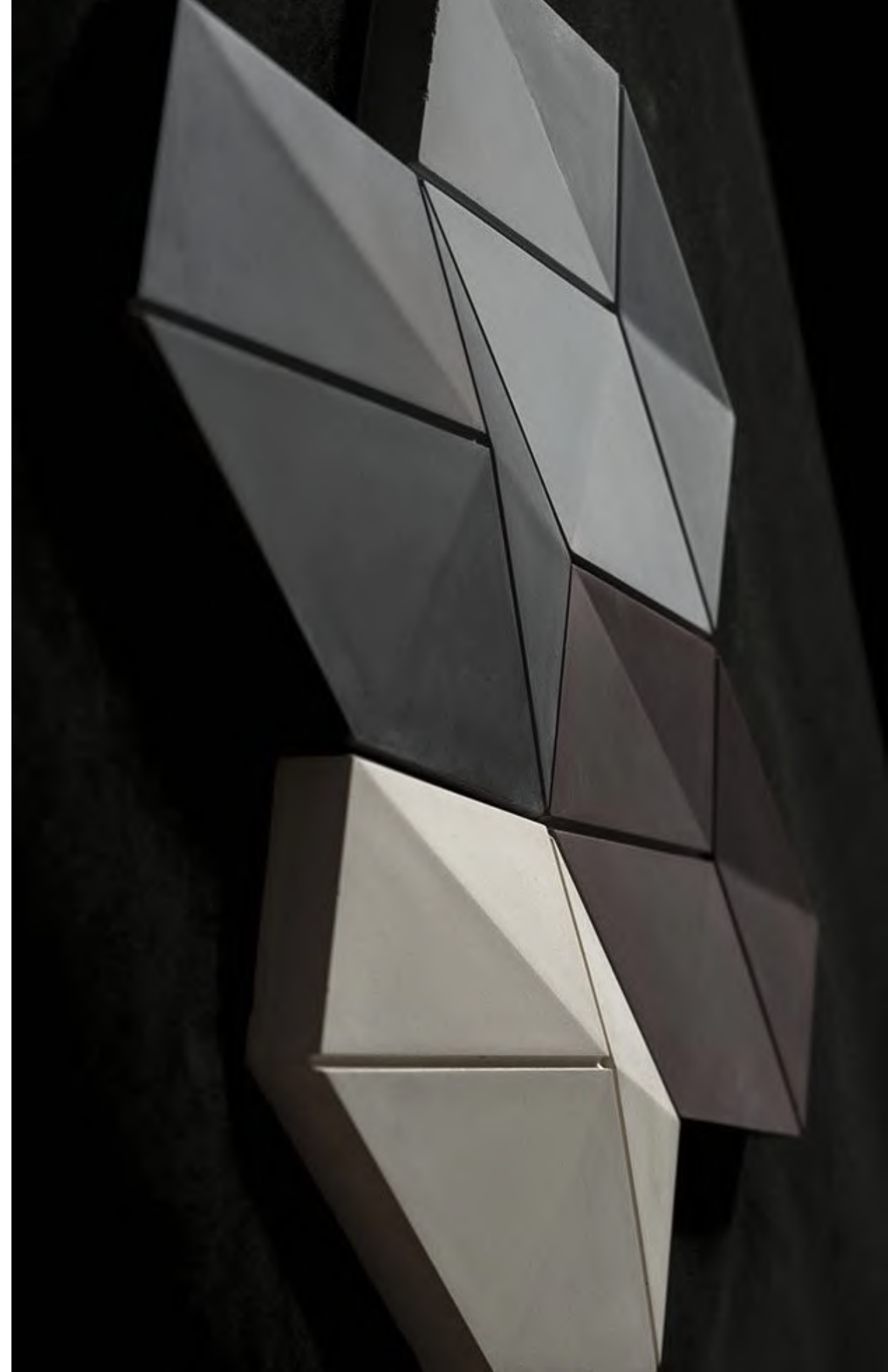


APERIODIX – PYAMIDS

Aperiodix is a concrete tiling system designed for decorative wall surfaces designed by Ben Sandell, Situ Studio, Geoff Sosebee and Eric Weil for Oso Industries. The system is based on a set of three triangles that can be laid out in an aperiodic, or non-repeating, pattern which results in unique and constantly changing compositions. The Aperiodix system uses these three triangles and their mirrored shapes for a total of six unique tiles.

CAIRO

Loosely based on the paving stones used in Egypt's capital city, our "Cairo" tiles are an exploration of pentagons and hexagons and the geometric intersection of these two tessellating shapes. Using just one concave and one convex, they can be laid out in any number of different combinations to create exciting plays of light and shadow, order and chaos. When laid out in precise order of orientation and surface, they create a beautifully ordered pattern, but when laid out in a random or alternating order and orientation they begin to create fascinating varieties of patterns and surfaces. Hand cast from a proprietary concrete mix, the Cairo tiles can be used indoors and out and are available in four standard colors.





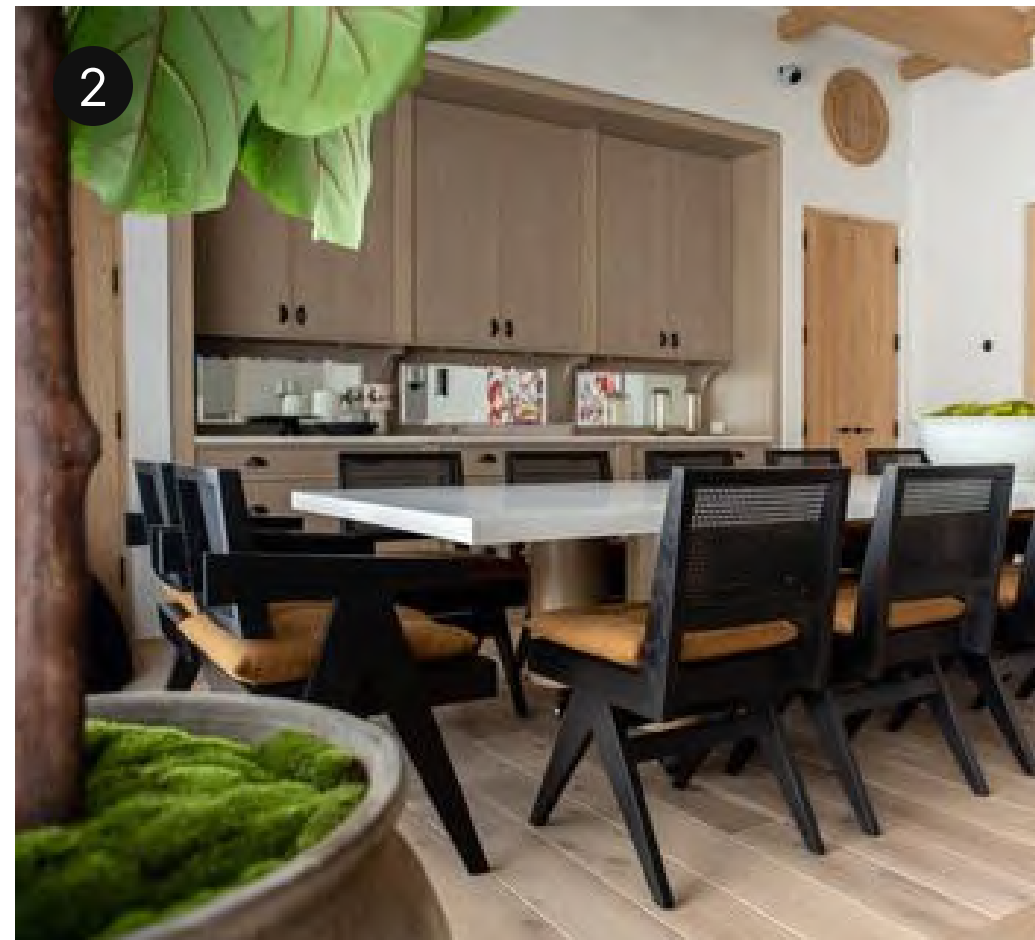
CUSTOM FURNITURE

CUSTOM FURNITURE



Terrazzo Outdoor Bench / Table

Custom terrazzo table and bench with inset cushions and cantilevered sides and open underneath.



Custom Large Dining Table

3" thick cast concrete top with room for 14 people.



Concrete Wood Block Table

Custom Custom double decker coffee table with floating concrete tops between hand sculpted wood blocks

ARCHITECTURAL ELEMENTS

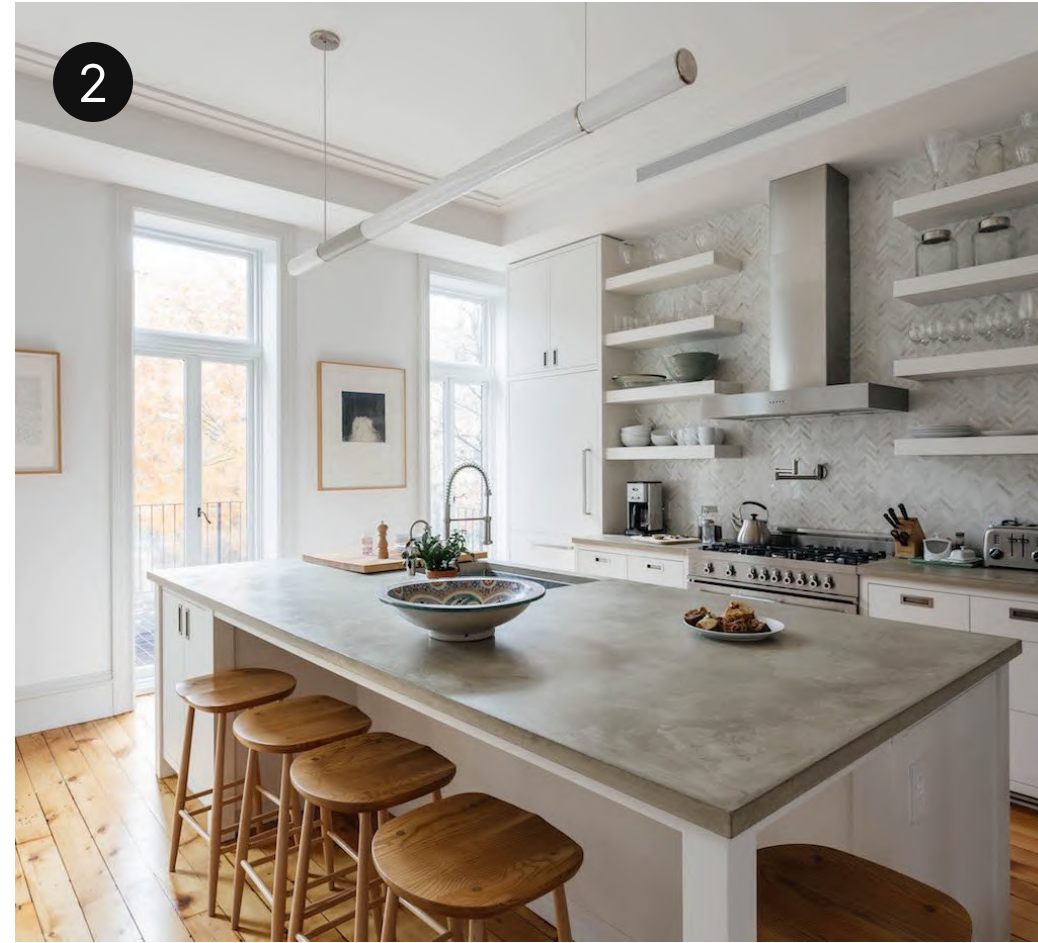


ARCHITECTURAL ELEMENTS



Custom-Troweled Architectural Elements

Hand troweled walls, floors, precast sinks & other furniture.



Custom Concrete Countertop

Cast in place kitchen countertops for Brooklyn, NY residence.



Custom Countertops & Backsplashes

Cast in place countertops and hand-troweled concrete backsplashes.

ART FABRICATION



ART FABRICATION



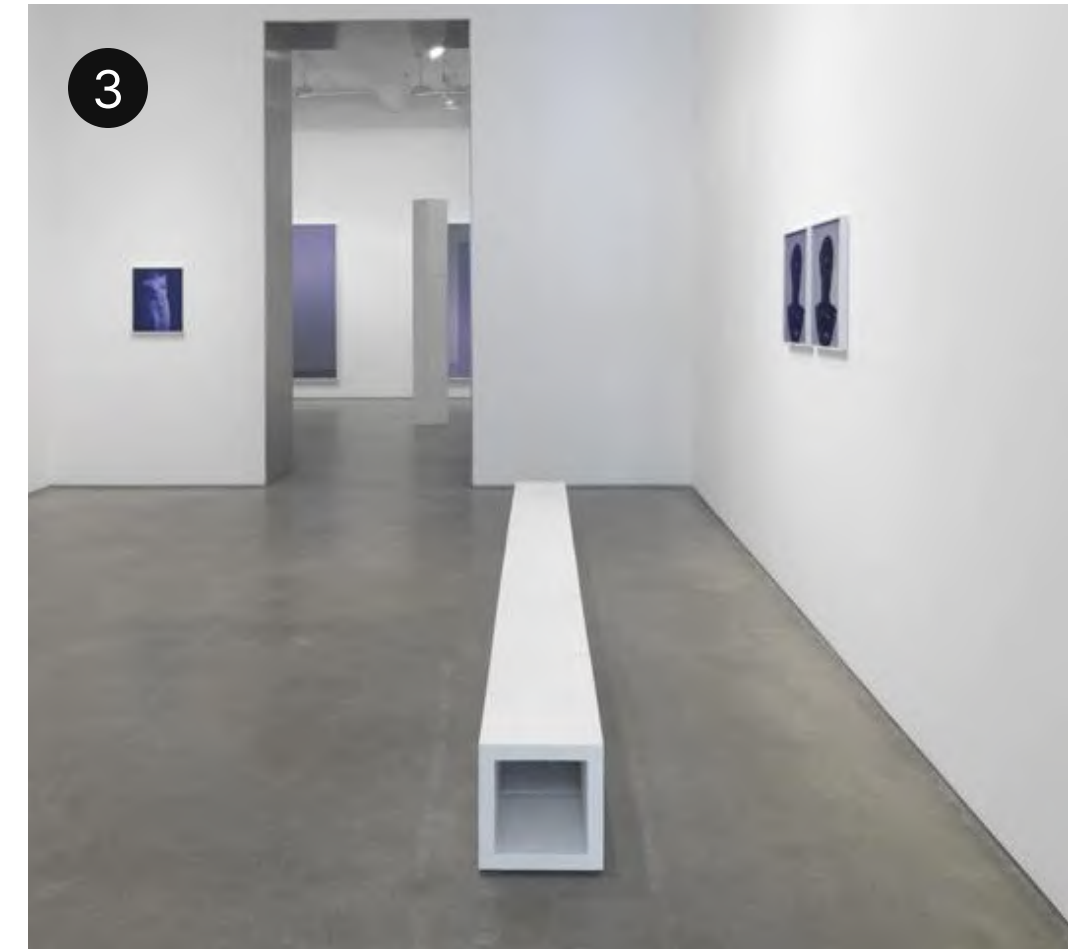
Snark Park Entrance Panels

Custom created faux travertine white concrete wall panels for entrance wall



Custom Concrete for Patrik Weder

Multiple custom concrete elements for art furniture and sculptures.



Custom Work for Sara VanDerBeek

Cast white concrete sculptures for art gallery installation.



SELECTED PROJECTS

Classic Car Club of Manhattan:

Custom Bar top for Iconic car club
based in Manhattan.

1

Custom logo embedded into
die wall.

2

Custom 30ft. long bar top
cast in place on site.





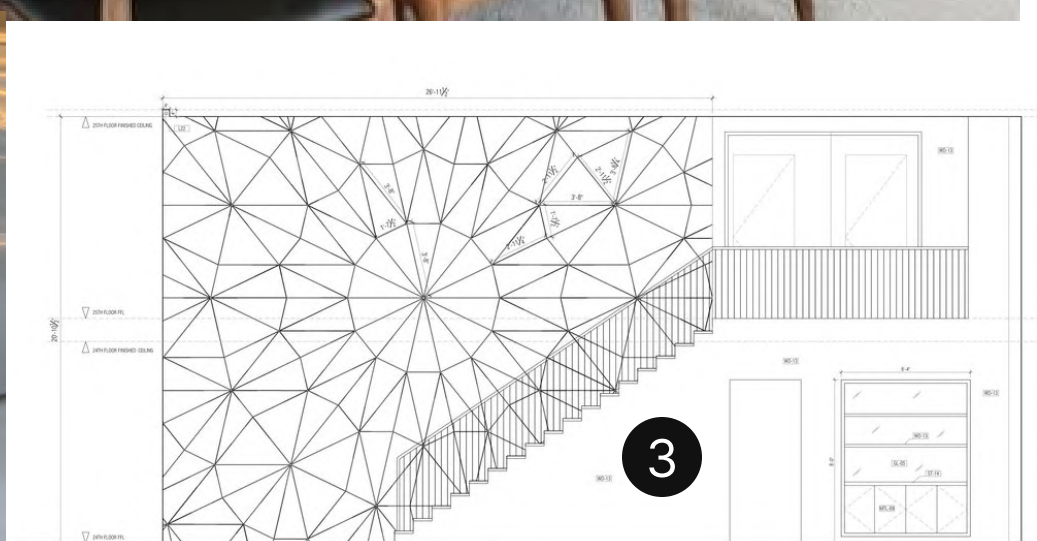
ONE CLINTON

Custom 27' Aperiodix Installation in Brooklyn Heights.

1 Custom 27ft wide x 21ft tall Aperiodix Hills wall installation.

2 Close-up of Aperiodix Hills tiles underneath light.

3 Line drawing of installation.



D.S. & Durga:

Custom concrete panels for boutique perfume store in Williamsburg.

The creation of the stratified linear look, rendered in thin precast panels, was a completely new process for us and getting each layer to line up properly from panel to panel would not be easy. We knew we had our work cut out for us but, like with all things concrete, we welcomed the challenge. Instead, we decided to create 1" inch thick panels with the 'rammed earth' effect and then mount them to the walls which would achieve the same effect.





Aēsop

Custom concrete cantilevered sink for boutique in Houston.

Staying true to their mission, Aēsop came to us seeking to make a variety of sleek, minimal pieces of furniture and architectural elements that would compliment the rest of the designs featured in their stores. For their Houston location, they opted for a massive, cantilevered sink which can be seen here.

CONTACT INFO





For over 10 years, Oso Industries has been showing its line at some of the most well-curated showrooms nationwide such as **Dennis Miller Associates** in New York City, **Industrial Storm** in Toronto, **Trammell-Gagne** in Seattle, **Town** in Denver and Scottsdale, **Paul+** in Atlanta, **DeAurora** in Chicago, **Design Alliance** in LA, and **HEWN** in San Francisco. The design studio also has ongoing relationships with a number of renowned architecture and design firms and welcomes collaborative projects related to custom furniture and architectural elements.

Address

1205 Manhattan Avenue
Suite 1-1-3
Brooklyn, NY 11222

Phone

+1 (347) 987-4526

Email

info@osoindustries.com

OSO INDUSTRIES

